

Public Engagement Board

COVID-19 Programme Team

CLT Lead: Helen Gollins, Director Public Health Trafford

17 November 2021

Data surveillance update paper to Public Engagement Board

Report Summary:

This paper provides an update on the current data position for COVID-19 within Trafford and provides comparative information with other GM localities. Data insights into any potential trends are provided based on best available public health information and intelligence available.

Overview of the current position:

Overview

- There were **870** confirmed cases during the week ending Wednesday 10 November, with the highest number of cases (**174**) reported on **Tuesday 09 November**.
- We have seen a decrease in our 7 day case rate to **366.2/100k** from **425.5/100k** in the previous week. Despite seeing a reduction, more recent data suggests a slight increase in our case rate over the coming days.
- Trafford now has the 3rd highest case rate across GM, but remains above the North West (**337.9/100k**) and England (**351.9/100k**) averages.
- Trafford's testing rate has dropped when compared to the previous week (at **514.4/100k** from **585/100k**), whilst our positivity rate has dropped (at **10.3%** from **11%**).

Age Profiles

- Case rates have dropped for most ages when compared to the previous week, however most recent days shows an increase in daily cases for 0-14 year olds and 30-44 year olds.
- Case rates are now highest for 5-9 year olds (**622.1/100k**), increasing above 10-14 year olds (**548/100k**). Most recent data suggests further increases for these ages.

- Case rates for residents aged 60+ have decreased slightly from the previous week (at **203.8/100k** from **224.2/100k**), and we don't expect much change over the coming days. Rates are higher among 60-74 year olds (**246.4/100k**) compared to residents 75+ (**125.3/100k**).
- PCR testing rates remain lowest for residents below the age of 30.

Geography

- Case rates are highest for Trafford's South and West localities – although we are seeing less variation in rates by geography.
- Case rates are highest for the wards of Flixton (**502.7/100k**), Hale Central (**471/100k**), Urmston (**466.9/100k**), and Altrincham (**460.4/100k**).
- Case rates have increased most in Trafford West: Urmston (**+55.9%**) and Flixton (**+35%**).
- The wards of Hale Barns (**-58.9%**), Brooklands (**53.4%**), and Gorse Hill (**-48.1%**) have seen the biggest reduction in their case rate during the most recent week.

Hospital Activity

- There were **166** COVID-19 admissions during the week ending Sunday 07 November compared with **193** COVID-19 admissions during the previous week (*Including Manchester University Foundation Trust, Stockport Foundation Trust, and Warrington & Halton Teaching Hospitals Foundation Trust*).

Public Health Concern

Trafford's case rate reached the highest in the country on 9th October 2021 after peaking at a rate of **846.8/100k** (for the 7 days up to 09 October). Since this time we have seen a steady decline in our rate (currently at **366.2/100k**). Rates have declined most for young persons below the age of 19, whilst our adult population have experienced a steadier decline. However, more recent data suggests that we may see a slight rise in our case rate over the coming days.

Following the drop in our case rate, we have seen a sharp reduction in our testing rate over the past three weeks. We now have similar testing rates to the North West and England averages, whilst still having the highest testing rate across the 10 GM boroughs. We have also seen recent reductions in our positivity rate (at **10.3%** from **11%** in the previous week), dropping below other GM boroughs and currently 6th highest in GM.

Our case rate remains high, above the national and North West average, and much higher than our neighbouring borough of Manchester (**269.6/100k**). We need to halt and reduce our current rate to protect our vulnerable populations, especially those aged 60+ and/or with preexisting health conditions.

The successful roll-out of COVID-19 vaccination, including booster vaccinations has helped weaken the link between infection and hospital admissions/COVID-19 mortality, however there are still 1/5 of eligible residents not vaccinated with at least 1 dose. Despite the successful roll out of the vaccine programme, we have seen inequalities in uptake, specifically linked to decreasing age and geographical areas with highest levels of deprivation. Vaccines offer protection but risk of infection is still present if borough-wide transmission is not controlled.

Although rates have declined over the past few weeks, we recognise that we must not be complacent as a borough and we will continue to focus our efforts on reinforcing COVID-19 secure measures. We will continue to support areas with lower uptake of vaccinations (especially in over 60s) for preventative measures and to improve vaccination uptake.

Outbreak Management and Risk Reduction

Business settings

- We continue to urge all businesses to make their workplaces COVID-19 secure, including ensuring that staff are routinely testing and properly protected when they return to the workplace.
- We continue to promote the importance of COVID-19 vaccinations for all eligible populations.
- We are monitoring the impact of events on COVID-19 rates in the borough.

Health & Social Care Settings

- We need to work together to keep our most vulnerable populations protected. We are managing outbreaks in care homes. While some fully vaccinated staff and residents are testing positive, their disease is much milder than in unvaccinated people.
- Vaccination remains a safe and effective method of protecting yourself from severe illness.
- We will be encouraging all health and social care settings to continue to use all the current infection prevention and control measures to keep staff and service users safe.
- Trafford have recommended that providers pause indoor visiting by children and young people aged 16 and under. Exceptions include end of life visits, and visits that include outdoor socially distanced visits. This enhanced measure was reviewed on 15/11 and the recommendation is that it continues for a further two weeks.

Education & Early Years Settings

- Secondary school pupils should continue with twice weekly LFD testing and all staff/pupils should wear face coverings in communal areas.
- We'd like to encourage people to register negative LFD test results on the national testing portal.
- Any children identified as a close contact should have a PCR test. The Outbreak Team has developed and shared a suite of resources with settings to support them.
- School **household contacts**; children and young people and staff who attend/work in schools and are household contacts should do daily LFD testing for a period of 10 days
- We are continuing to monitor numbers of cases reported through from Early Years settings, fortunately numbers are low, but we would continue to promote vaccination and routine LFD testing.
- We continue to promote the importance of COVID-19 vaccinations for all eligible populations.
- There are currently enhanced measures in Trafford's early years and education settings which includes the wearing of face coverings. This enhanced measure was reviewed on 15/11 and the recommendation is that it continues for a further two weeks.

Contact Officer:

Name: Tom Seery, Public Health Data Surveillance Analyst

Tel: 07929876642

Email: Thomas.seery@trafford.gov.uk

1.0 Vulnerable Population groups

1.1 We have seen case rates decrease slightly in our 60+ population over that the past 7 days, however we do not expect much change over the coming days.

1.2 Table 1 shows that 60+ case rates are highest for Trafford Central and Trafford West. We are seeing weekly fluctuation in locality rates for 60+ residents, however rates have stayed highest in Trafford Central over the past two weeks.

Table 1. Case count and incidence per 100,000 population by ethnicity

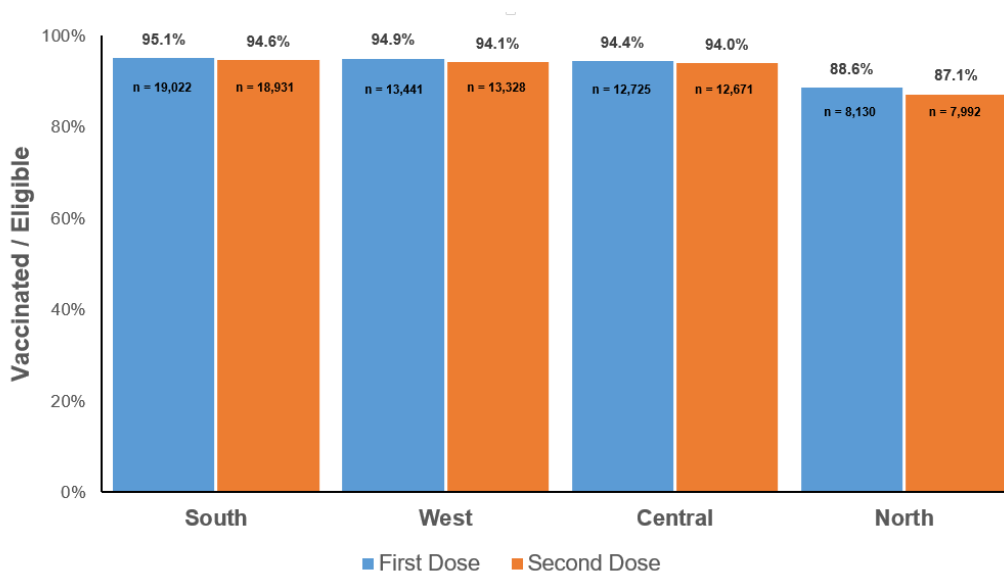
Trafford, 27 October to 10 November 2021

	Previous Week	Current Week	Percentage Change
Central	283.9	245.6	-13.5
West	162.0	243.0	50.0
South	232.2	165.1	-28.9
North	200.8	153.5	-23.5

1.3 Vaccine uptake (first dose and both doses) is high among our 60+ population, however we are seeing variation between our 4 localities.

1.4 Between localities with the highest and lowest uptake, we are seeing a percentage gap of 6.5 for first dose uptake, and 7.5 for second dose uptake.

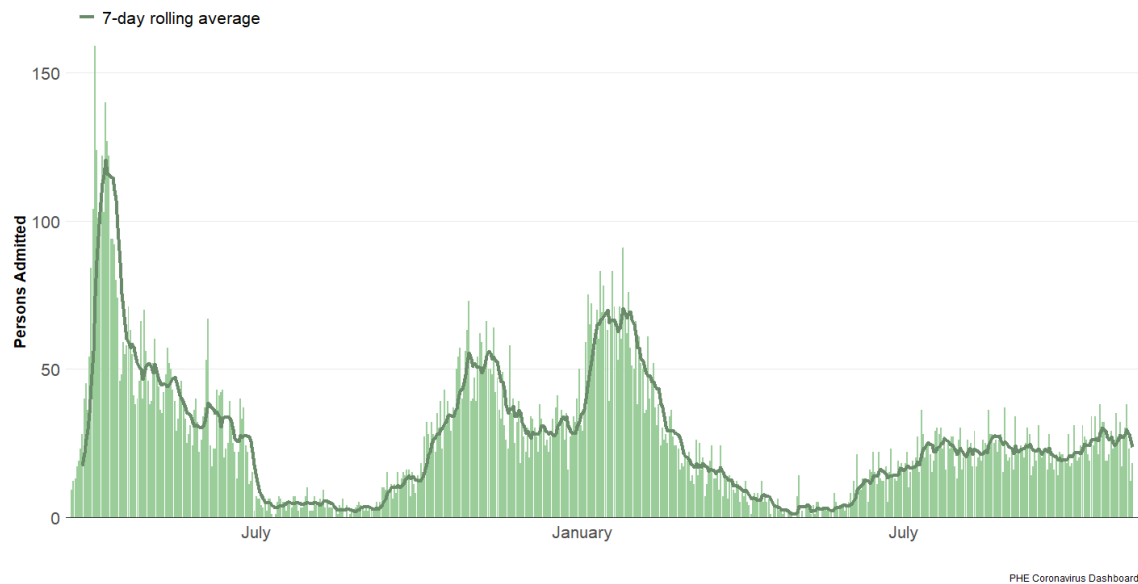
Figure 1. First and Second dose uptake for residents aged 60 years and over Trafford, up to 08 November



1.5 COVID-19 hospital admissions have decreased over the past week - following a 3 week period where we were seeing slight increases.

1.6 We will continue to monitor any week-by-week changes.

Figure 2. Daily Count of COVID-19 Hospital Admissions (including *Manchester University Foundation Trust, Stockport Foundation Trust, and Warrington & Halton Teaching Hospitals Foundation Trust*).
19 March 2020 to 07 November 2021



2.0 Trend of COVID-19 cases within Trafford

2.1 Case rates remained volatile throughout the month of August and early September, but we started to see a steady rise in cases after mid-September.

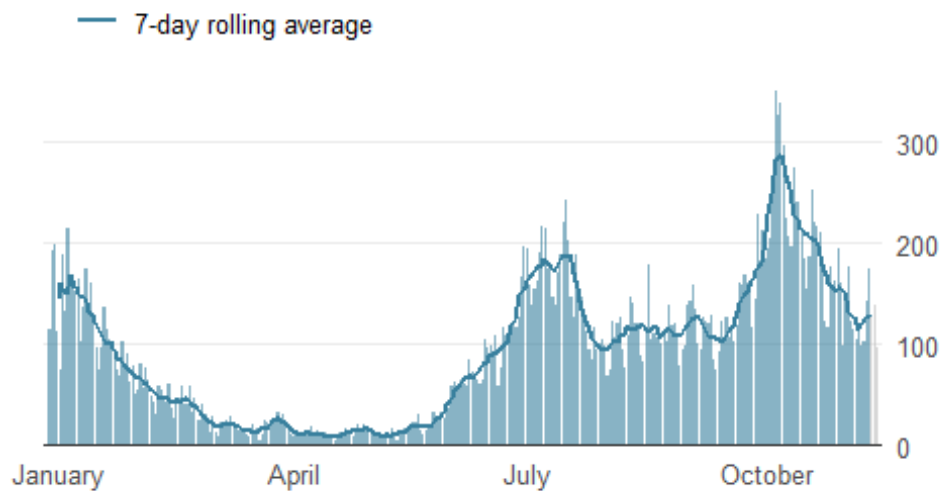
2.2 Daily positive cases spiked in early October, exceeding 300 daily cases and leading to a 7-day case rate greater than **800/100k**.

2.3 Our case rate peaked at a rate of **846.8/100k** for the 7 days up to October 9th, and reached highest in the country.

2.4 Case rates dropped throughout the month of October, however most recent days shows a slight increase in the number of daily cases, indicating that our rates are levelling-off.

Figure 3. Epidemic curve of daily confirmed new cases

Trafford, 28 December 2020 to 12 November 2021



3.0 Age profiles

3.1 When compared to the previous week, case rates have dropped for most ages, however recent data shows a slight increase in daily cases for all age groups.

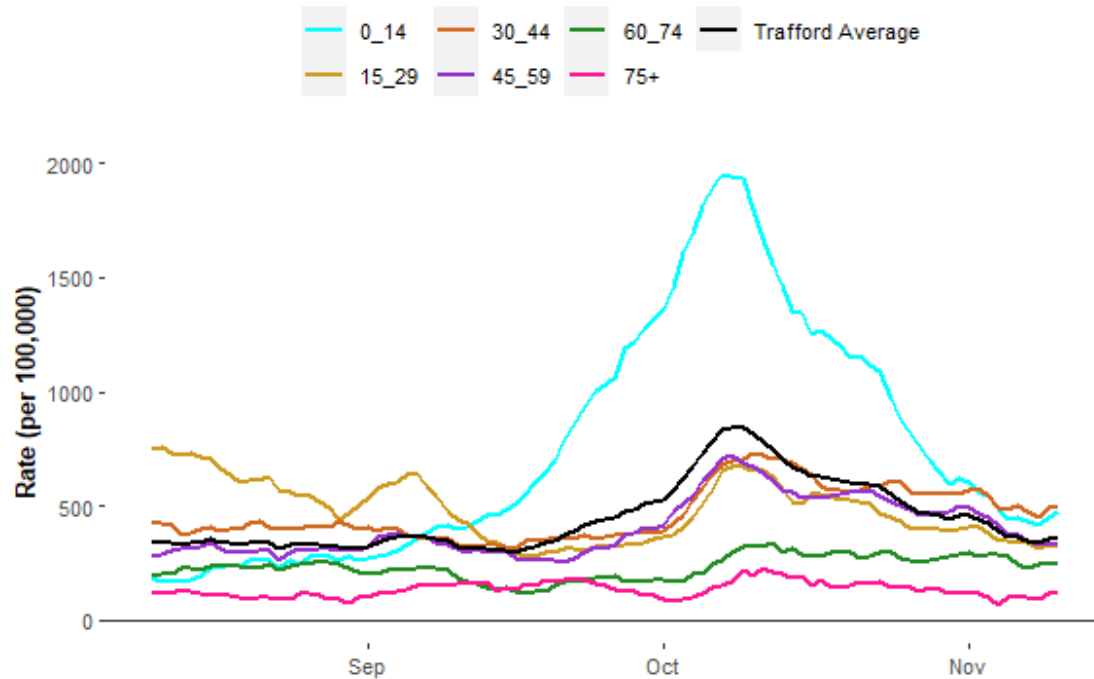
3.2 Case rates remain highest for 30-44 year olds (**504.4/100k**), followed by 0-14 year olds (**473.3/100k**).

3.3 Case rates for 60+ residents have dropped slightly from the previous week (at **203.8/100k** from **224.2/100k** in the previous week).

3.4 Case rates are higher for 60-74 year olds (**246.4/100k**) when compared to residents aged 70+ (**125.3/100k**).

Figure 4. Age-specific case rates per 100,000 population Trafford, 7-day moving average)

Trafford, 12 August 2021 – 10 November 2021

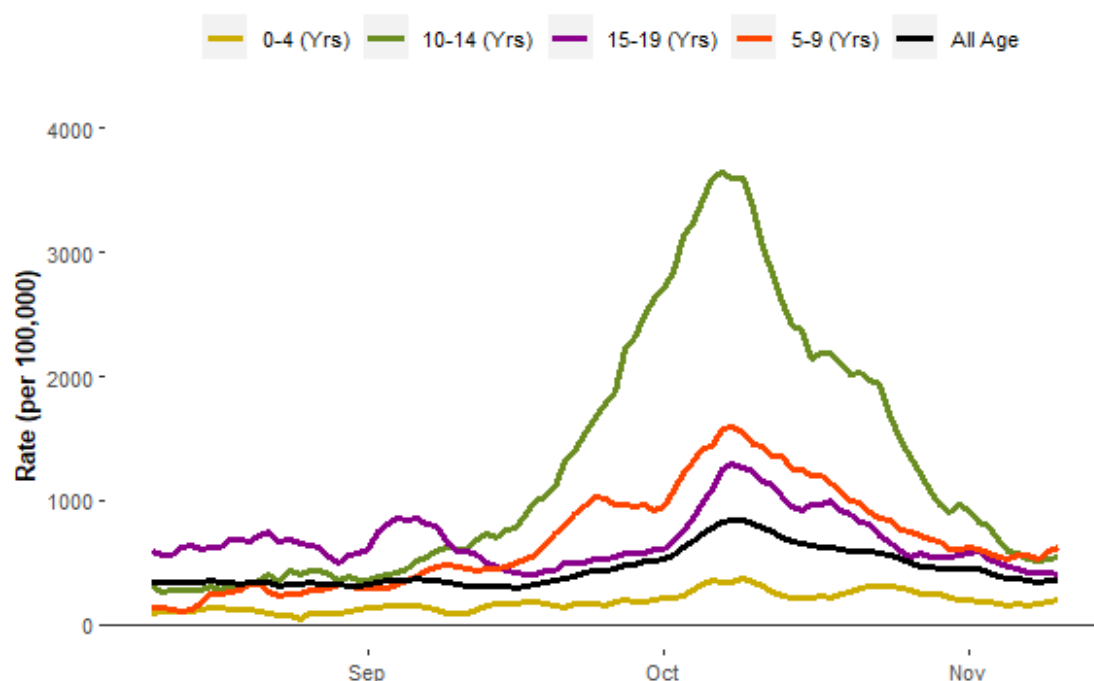


3.5 Among young persons below the age of 20, case rates are now highest for 5-9 year olds, increasing from the previous week (at **622.1/100k** from **579.8/100k** in the previous week).

3.6 Case rates have dropped for 10-14 year olds when compared to the previous week, however most recent data suggests that rates are starting to increase for this age group.

3.7 We aren't seeing rates increase for young people aged 15-19.

Figure 5. School case rate per 100,000 residents (7-day moving)
Trafford, 12 August to 10 November 2021



4.0 Geographical spread of COVID-19 in Trafford

4.1 Case rates are highest in Trafford West and Trafford South, however we are seeing less variation in rates by geography.

4.2 Case rates have dropped for the majority of wards (17/21).

4.3 Case rates are highest for the wards of Flixton (**502.7/100k**), Hale Central (**471/100k**), Urmston (**466.9/100k**), and Altrincham (**460.4/100k**).

4.4 Case rates have increased most in Trafford West: Urmston (**+55.9%**) and Flixton (**+35%**).

5.0 PCR Testing

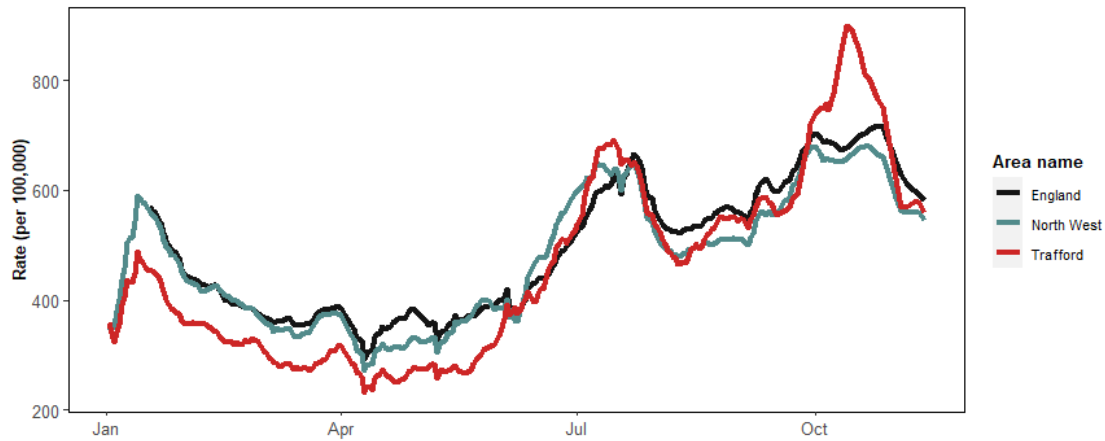
5.1 Trafford's testing rate peaked on October 10th, carrying out 900 daily tests per 100,000 residents, well above the England and North West averages.

5.2 We have seen a sharp reduction in testing since early October, and more recently resembling the testing rates of the North West and England averages.

5.3 Trafford's testing rate remains highest across the 10 GM boroughs.

5.4 Trafford's daily testing rate sits at **514.4/100k** which is a reduction from the previous week (**585/100k**). Trafford's testing rate is below the England average (**559.6/100k**).

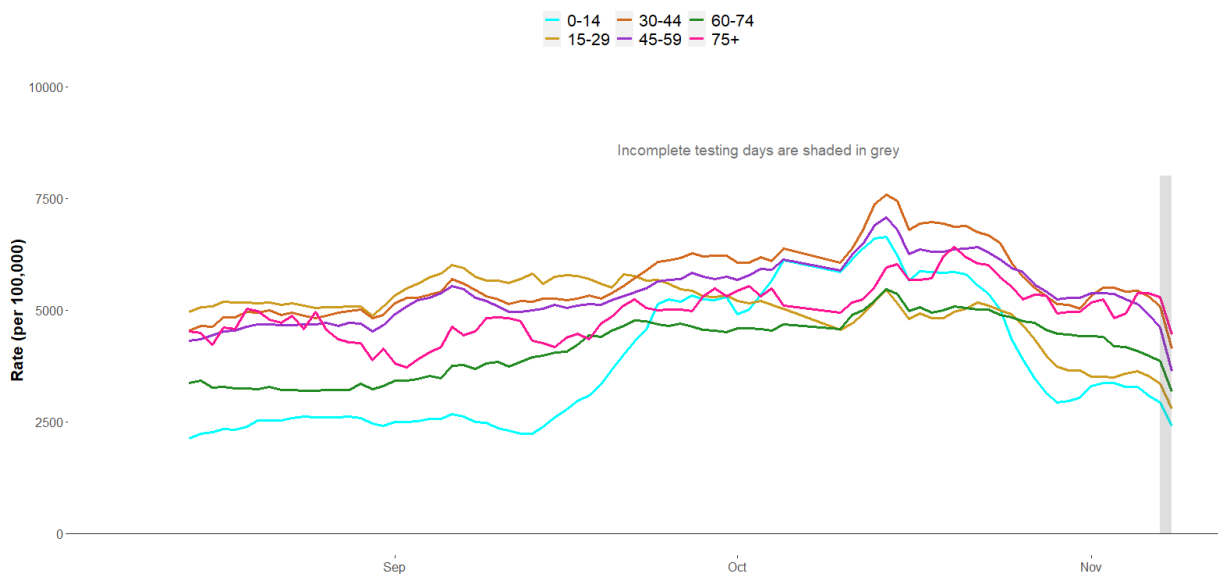
Figure 6. Daily testing rate (7-day average): England, North West, & Trafford
Trafford, 01 January to 08 November 2021



5.5 Testing rates are highest for residents aged 75+, followed by 30-44 year olds.

5.6 Testing rates remain lowest for residents below the age of 30. We are yet to see testing rates increase for 0-14 year olds.

Figure 7. Age-Specific Testing rate per 100,000 residents (7-day moving)
Trafford, 14 August to 08 November 2021



6.0 Positivity

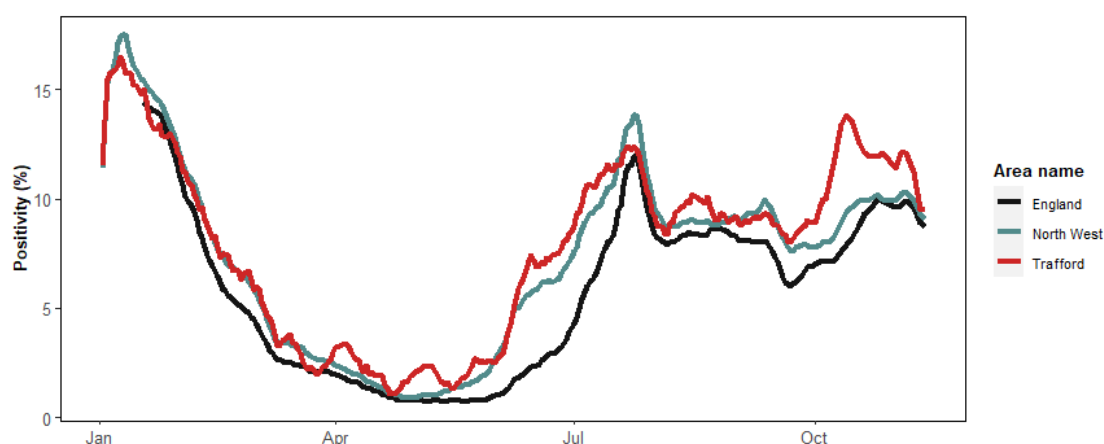
6.1 We have seen a reduction in Trafford's positivity rate over the past 3 weeks, but most recent data shows that our positivity rate is levelling-off, at **10.3%**.

6.2 Our positivity rate remains above the North West and England average, and is 6th highest across the 10 GM boroughs.

6.2 Trafford's 7-day positivity rate sits at **10.3%** which is a decrease from the previous week (**11%**). Trafford's positivity rate is above the England (**9.2%**) and North West averages (**9.4%**).

Figure 8. 7-day Positivity rate: England, North West, & Trafford

Trafford, 01 January to 08 November 2021



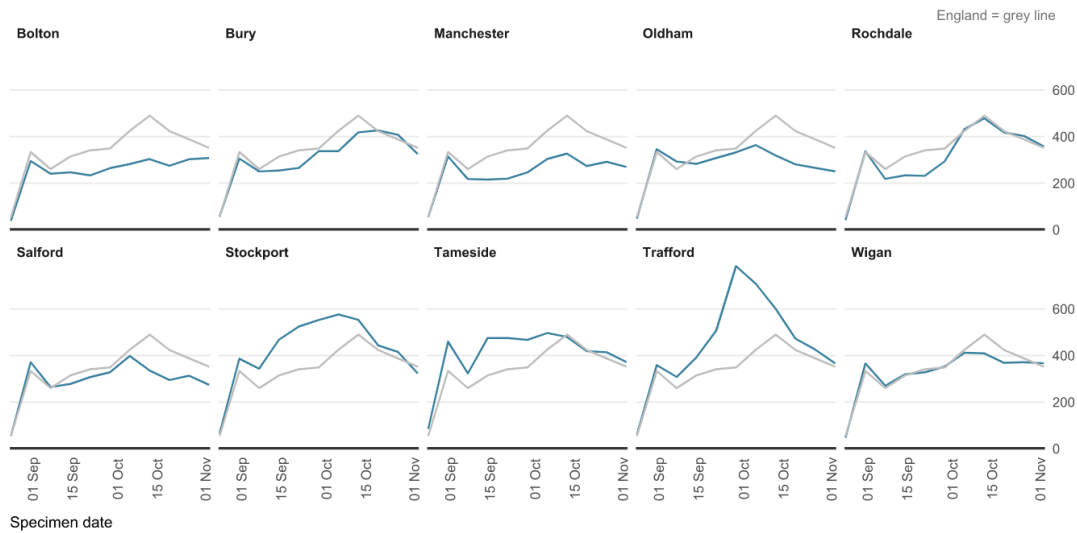
7.0 Comparative data of COVID-19 cases within the local authorities of Greater Manchester

7.1 Trafford saw the sharpest rise in its case rate throughout September and October, followed by Stockport.

7.2 Case rates are stable or are falling for most boroughs.

7.3 Trafford has the 3rd highest case rate across the GM boroughs, although similar to the case rates of Tameside (**371.6/100k**), Wigan (**366.8/100k**), and Rochdale (**358.1/100k**).

Figure 9. Weekly incidence per 100,000 population by local authority
Greater Manchester, 04 September to 10 November 2021



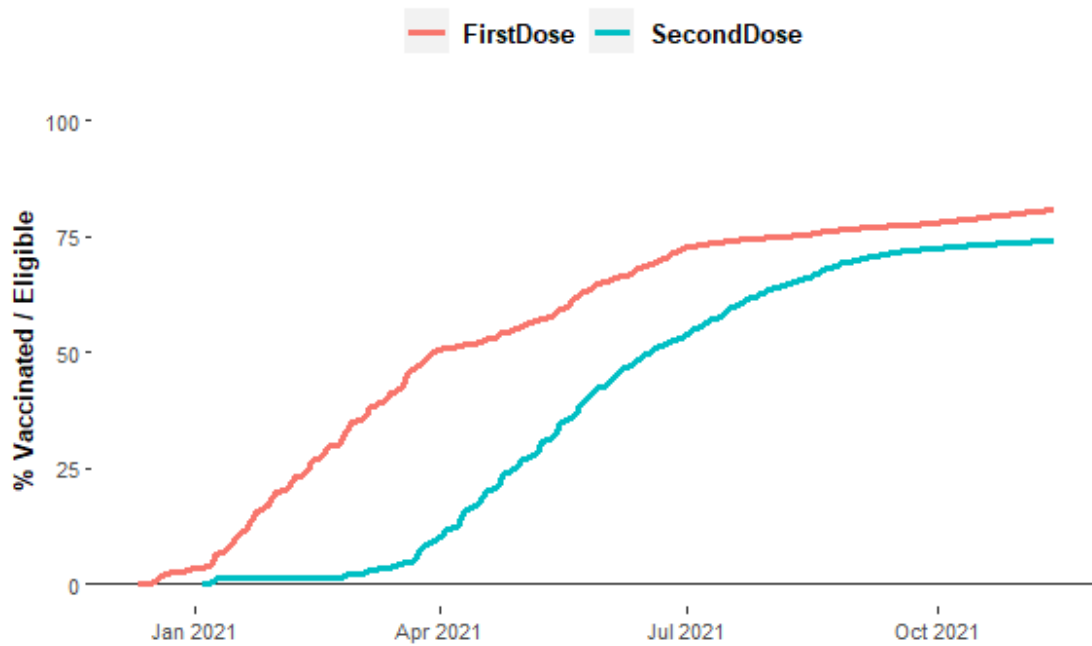
8.0 Vaccinations

8.1 The total percentage of Trafford residents (Aged 12+) administered their first vaccine dose on **Saturday 13-11-2021** was **80.7%** (increasing by **0.3%** from the previous week).

8.2 The total percentage of Trafford residents (Aged 12+) administered both vaccine doses on **Saturday 13-11-2021** was **74.1%** (increasing by **0.2%** from the previous week).

Figure 10. Running total of first and second dose vaccines for Trafford residents (12 years and above)

Trafford, 09 December to 13 November 2021



Source: COVID-19 Situational Awareness Explorer

8.3 Vaccine uptake is lowest in Trafford North (**71.2%**) and highest for Trafford South (**84.6%**) among all eligible residents above the age of 12.